



Barton Greenway

Initial Landscape Review

Drawing Number: 4739-WSP-BA-XX-SK-LA-03000

July 2024



Barton Greenway Contents

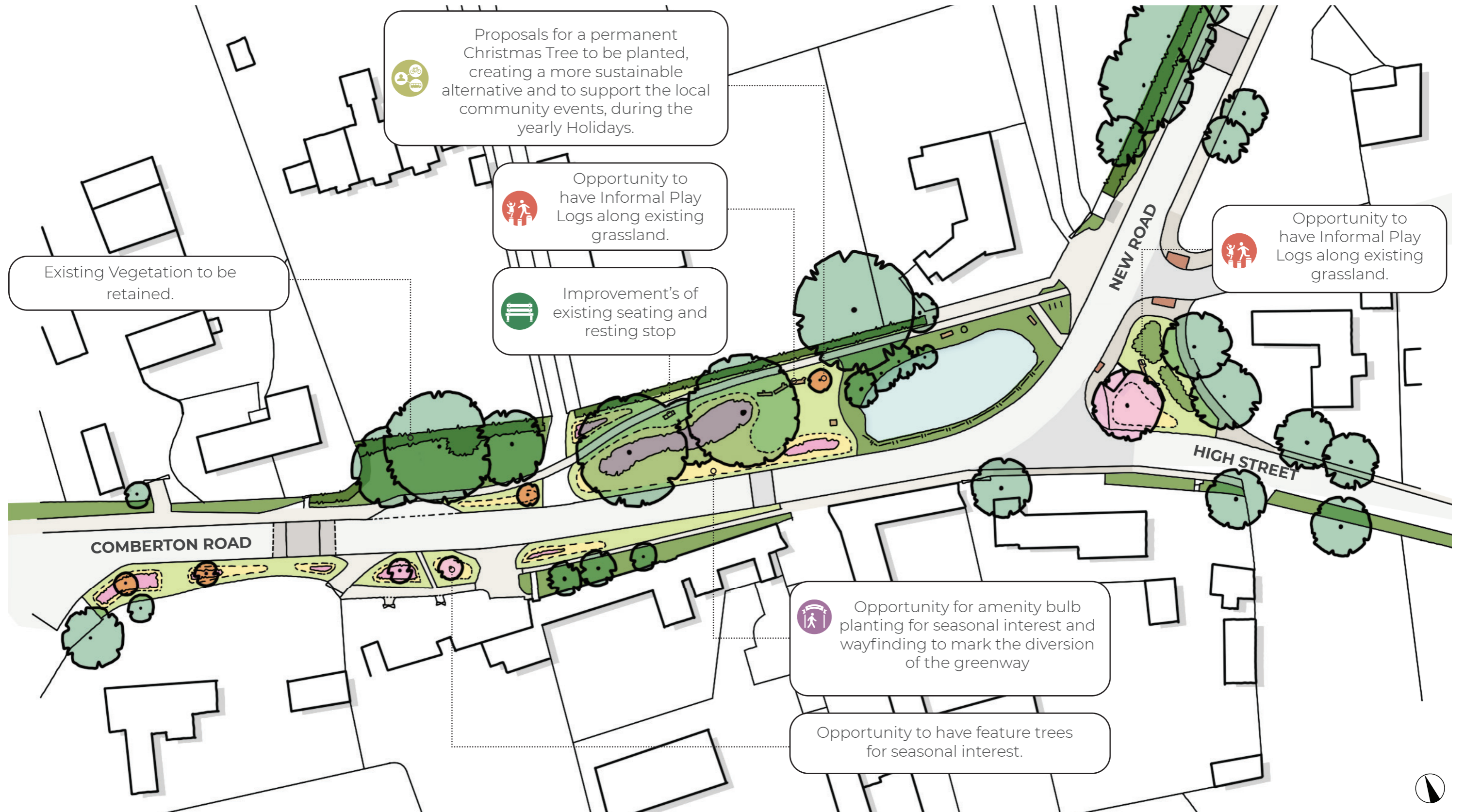
Project No: 70114739		Document Reference: 4739-WSP-BA-XX-SK-LA-03000			
Revision	Purpose of Issue	Originated	Checked	Approved	Date
P01	DRAFT	CL	RR	JF	18/07/2024
P02	FOLLOWING COMMENTS	CL	RR	JF	26/07/2024
-	-	-	-	-	-



The Mailbox
Wharfside St
Birmingham
B1 1RQ



Barton Greenway Illustrative Landscape Plan



Barton Greenway Planting Proposals



Barton Greenway Illustrative Landscape Perspective



Barton Greenway Illustrative Landscape Perspective



Barton Greenway Material Palette - Planting

Proposals enhance the existing elements around the pond, whilst retaining the amenity space within the design. These two essential existing elements are well recognised within the local community, so enhancing the space with additional wildflowers, bulbs, and seasonal interest will encourage further opportunities for biodiversity. Where possible we are aiming to preserve existing habitats/soft features and promote further local habitat creation through this design.

Offering a wider variety of flowering mixes will not only help improve natural capital but will enhance the recreational space, providing more definition for all the local events. Planting Typologies will include Flowering Lawns, Wildflower Mixes, and Seasonal Bulb Planting. These will be supported with additional street trees where appropriate.



Latin name: Prunus Avium 'Plena'
Common name: Wild Cherry
Location: Key Junctions



Latin name: Prunus 'Pink Perfection'
Common name: Flowering Cherry Tree
Location: Key Junctions



Application: Grass Verge
Mix: Eco species rich lawn (or similar)
Location: All grass verges



Application: Wildflower Meadow
Mix: Flowering meadow (or similar)
Location: All wildflower areas



Hyacinthoides non-scripta
 (Flowering mid April - May)



Galanthus nivalis
 (Flowering mid Jan - March)



Crocus vernus
 (Flowering Feb - March)



Tulipa sylvestris
 (Flowering April - May)

Barton Greenway Material Palette - Street Furniture

We have included an indicative street furniture palette. There is potential for the street furniture palette to contribute to the wider placemaking and wayfinding strategies, this could be through the use of colour or material selection.

All proposed street furniture elements should be

- Fit for purpose
- Robust
- Easily repaired or changed
- Sustainably sourced
- Located outside of clear movement routes



Seating type 1

Product: Hatton Rustic 4 Slat Seat

Supplier: Broxap (or similar)

Type: Hardwood with natural treated finish

Size: 2000 x 580 x 770mm



Seating type 2

Product: Stool without back

Supplier: Timber Play (or similar)

Type: Mountain Larch

Size: 1800 x 580 x 840mm



Informal Play Logs

Product: Sand Snake

Supplier: Timber Play (or similar)

Type: Mountain Larch

Size: 3900 x 3800 x 300mm



Insect Hotel - to be specified and located with guidance from designated Ecologist.



Bird Box - to be specified and located with guidance from designated Ecologist.